



Fixed Mobile Convergence Enterprise Solutions

Shimon Dahan

Cisco Global Mobile Team

Why FMC is causing a "Perfect Storm"

HANDSETS

Multimode devices becoming reality



Open OS changes the ownership model

SIP & IMS

Move to Create Platform for IP-Based Services

Session and service setup and control over IP

Service Convergence

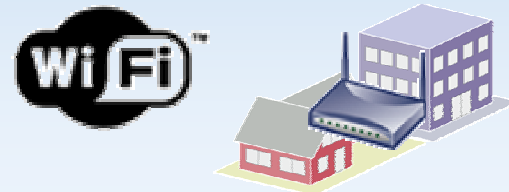
VoIP

Minutes continue to move away from fixed networks and on to broadband and mobile networks and eventually "peer-to-peer"



WLAN/UMA

Momentum Continues in Enterprise, Homes and Hotspots



Cisco Strategy

A closer look at fixed-mobile service convergence



APPLICATION CONVERGENCE

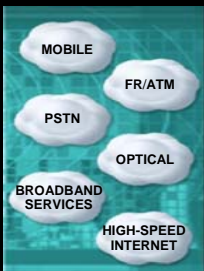
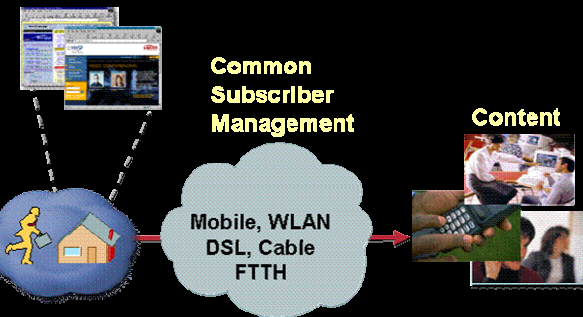
Integration of New Innovative IP D/V/V Services over Broadband for **Increased Revenue**

SERVICE CONVERGENCE

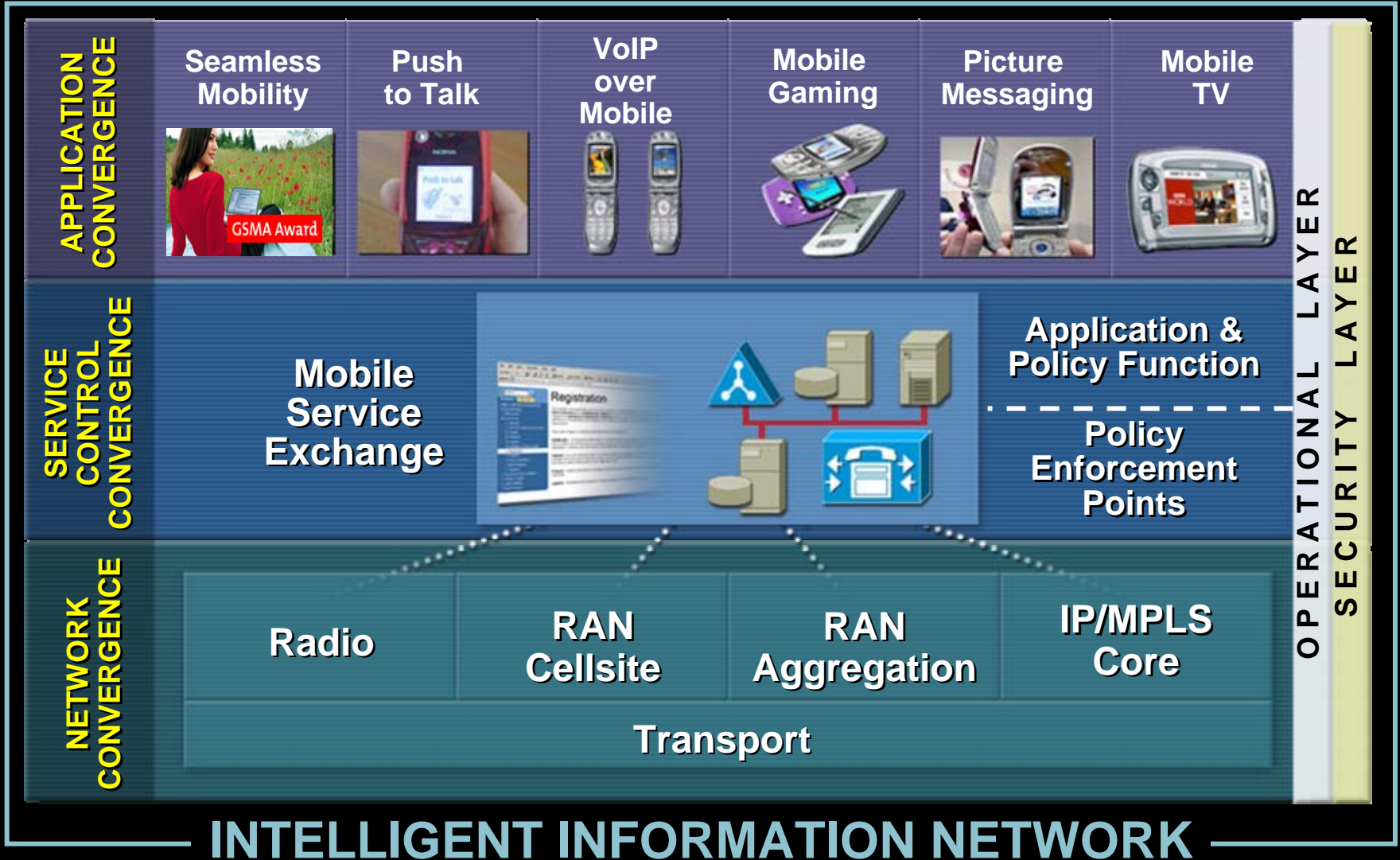
Service Continuity across Access for **Customer Loyalty And Stickiness**

NETWORK CONVERGENCE

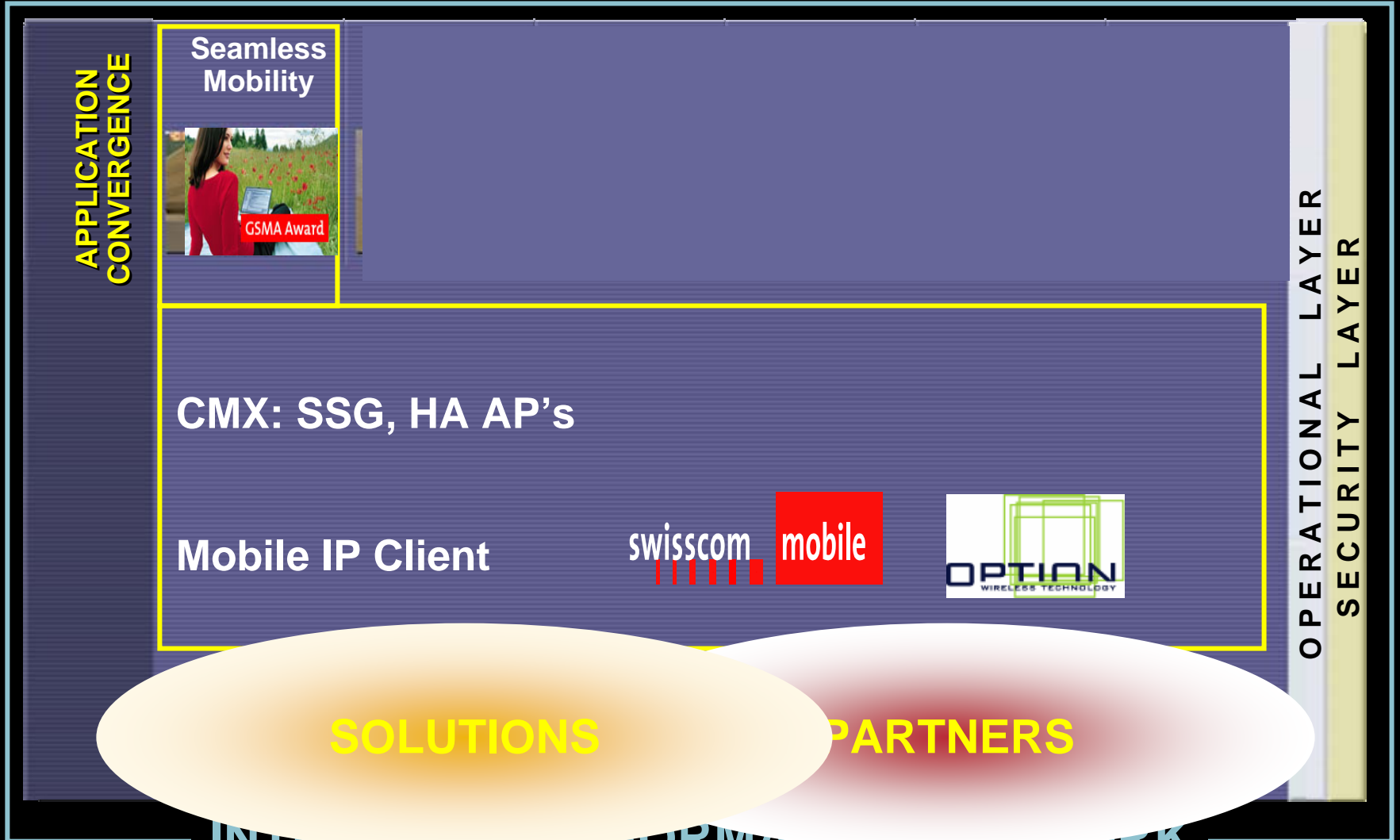
Eliminate Layers in the Network for **Increased OPEX/CAPEX Efficiencies**



Mobility IP NGN Architecture

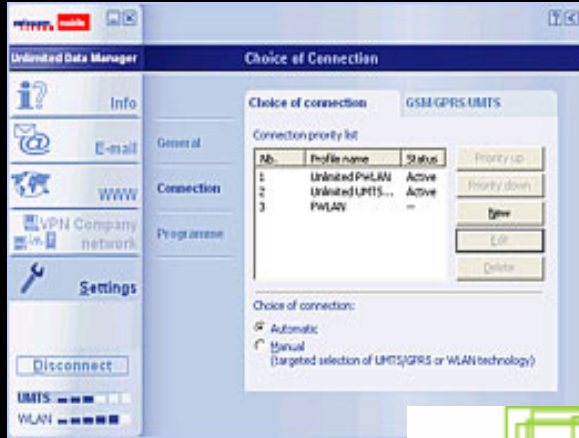


Mobility IP NGN Architecture



INTELLIGENT INFORMATION NETWORK

CMX: Seamless Mobility & Multiradio PC Data Card

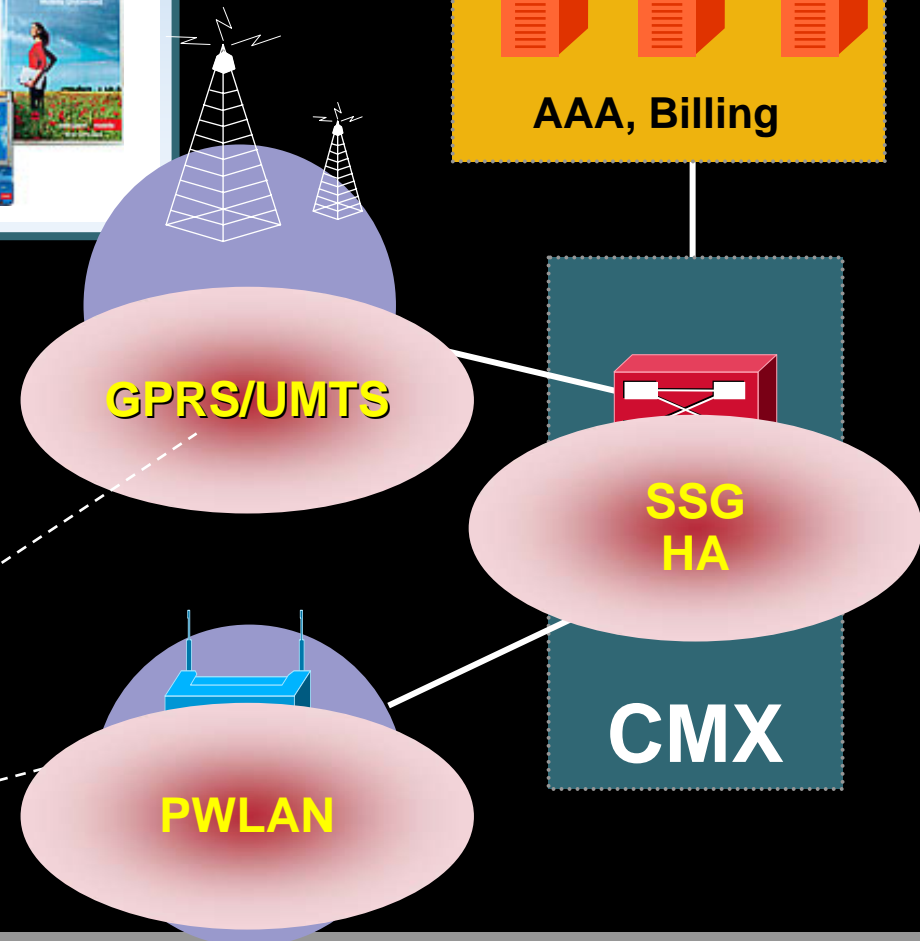



GUI

Compression

EAP-SIM | Mobile IP

Drivers

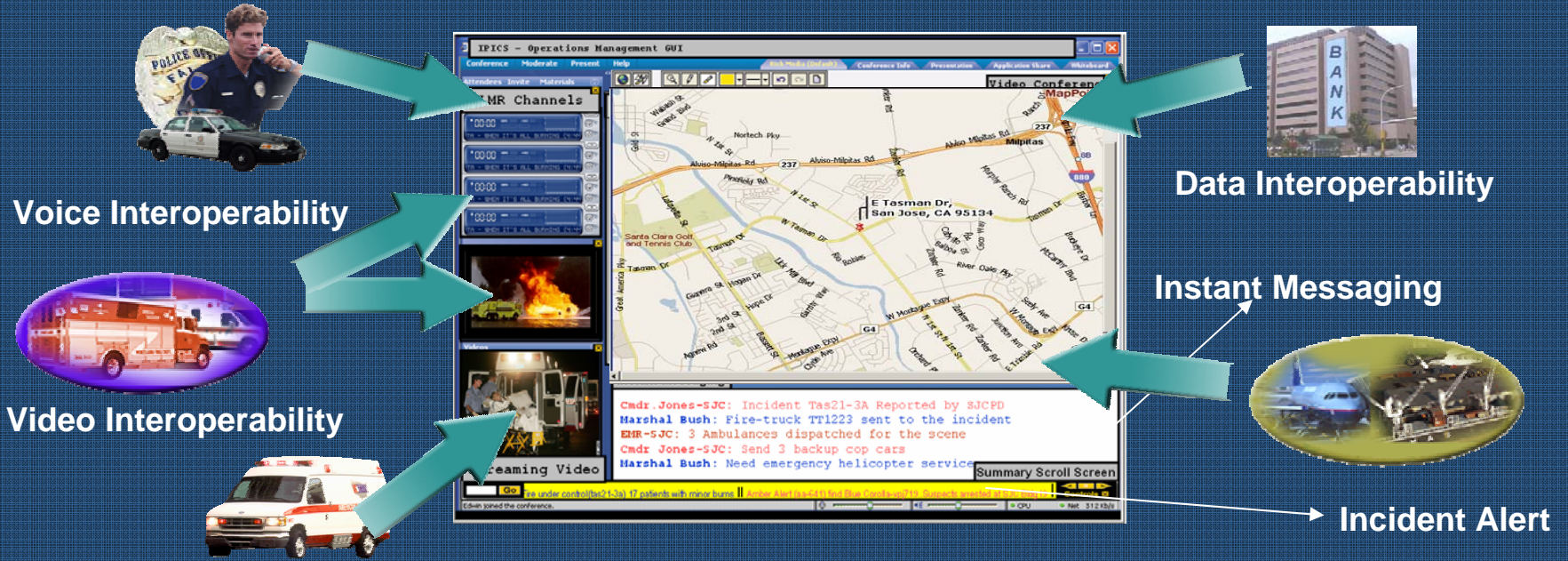



Mobility IP NGN Architecture



INTELLIGENT INFORMATION NETWORK

IPICS Vision and High-Level Architecture



IPICS Server



IVR



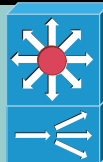
LMR GW



MAR



FW

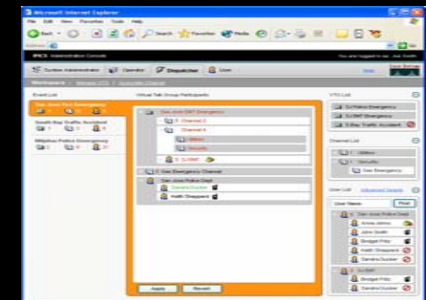


OTHER NW INFRASTRUCTURE

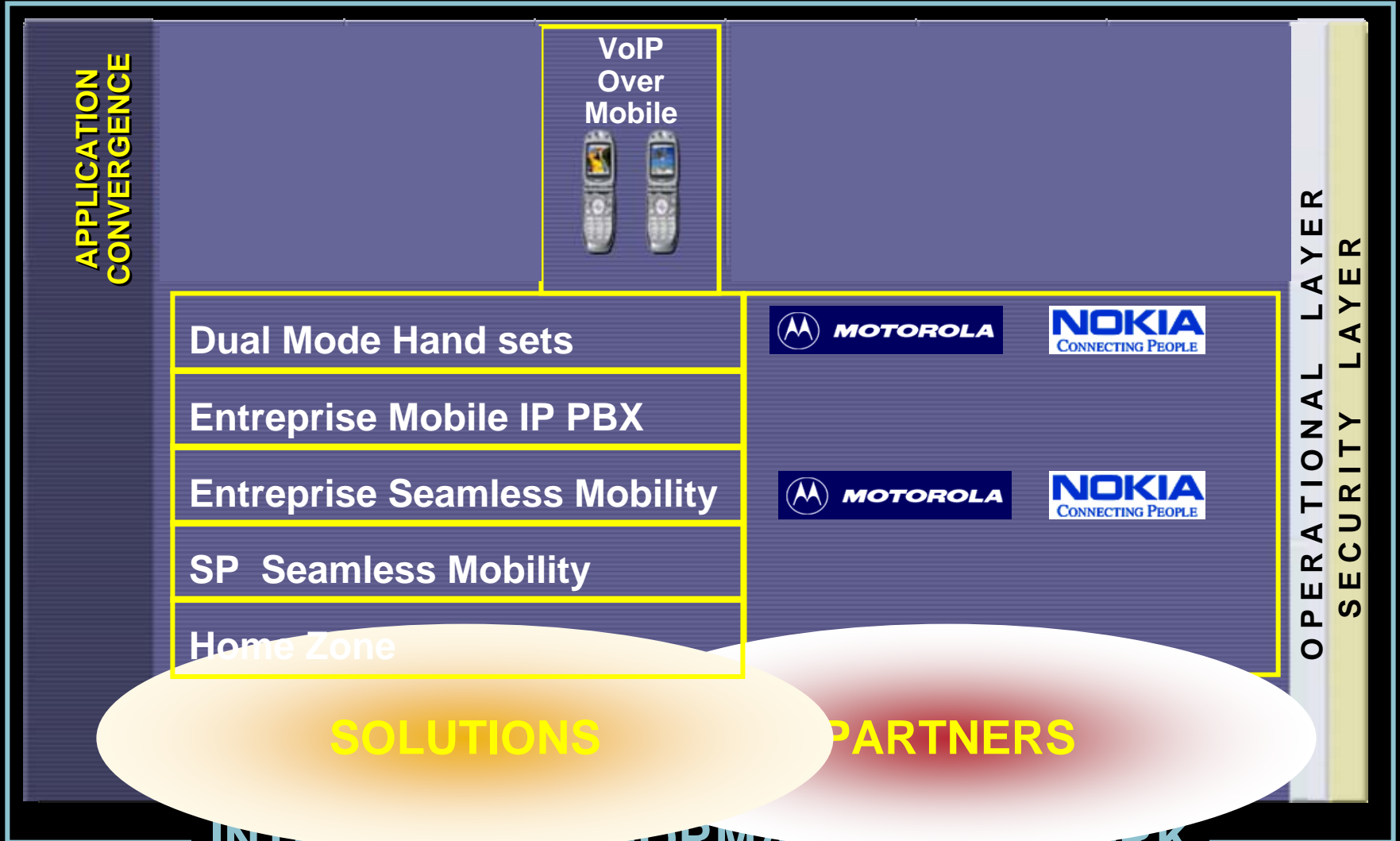


IPICS Components - Release One Oct 24

- IPICS Server (Appliance) MCS Platforms
- Media Services
 - RMS Router Media Services (Router DSP Release 1.0)
- Incident Management Console
- PMC (Push to Talk Management Center)
- IP Phone with Radio PTT capability
- Customization of PMC and Incident Management Console



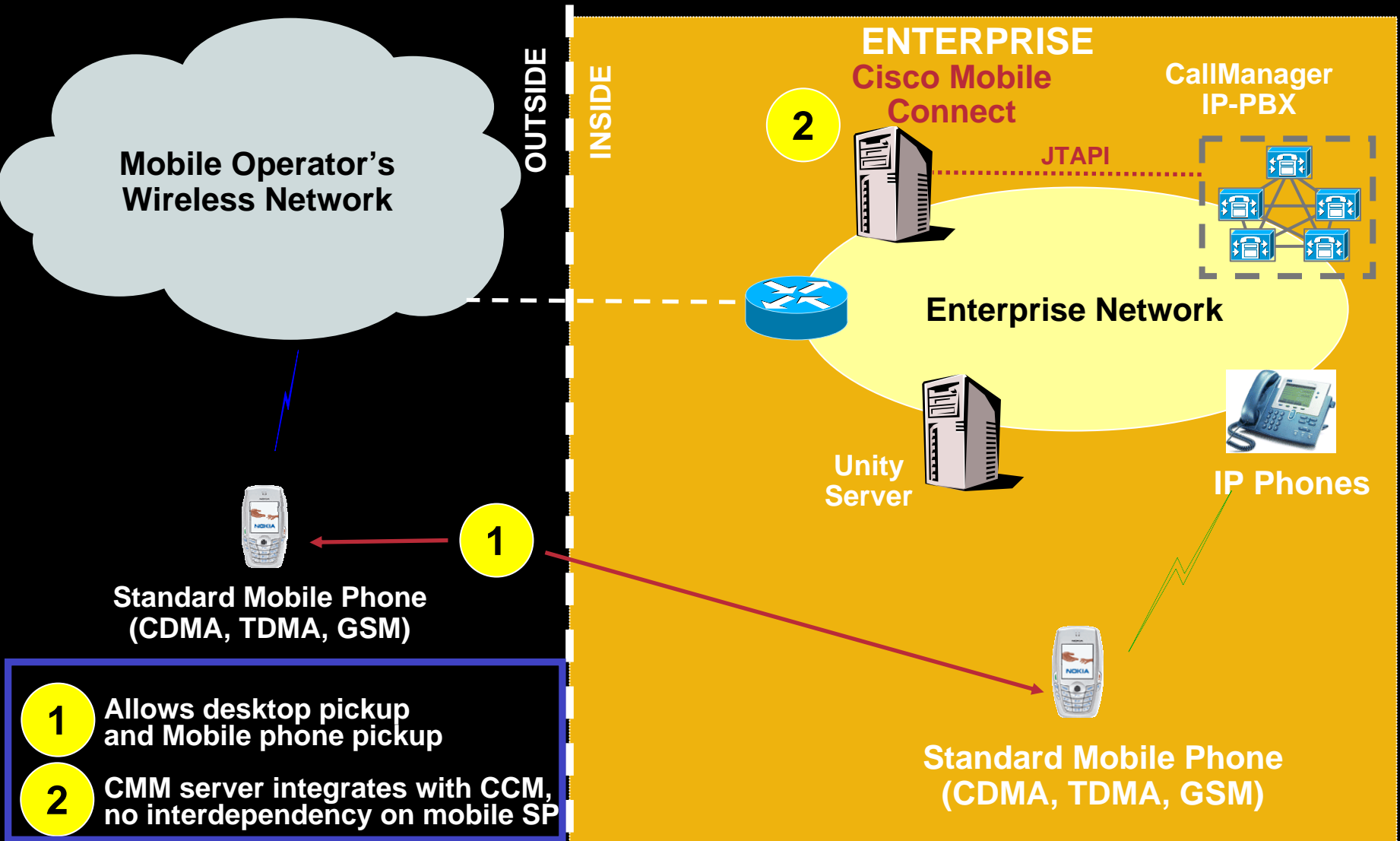
Mobility IP NGN Architecture



INTELLIGENT INFORMATION NETWORK

IPC Mobility Solution: (Phase 1)

Mobile Connect (for mobile phones)



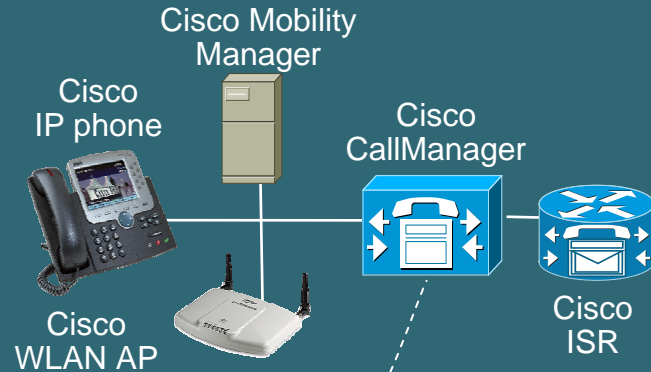
Cisco Mobile Connect Highlights

- **Simultaneous ring (single #)**
- **Multiple remote destinations (up to 4 – mobile, home, etc.)**
- **Single enterprise voice mail**
- **Desktop call pickup**
- **Mobile phone call pickup**
- **Enterprise “dial tone”**
- **Remote on/off**
- **Inclusive/exclusive filters**
- **Caller ID (given service provider support)**
- **System admin controllable user profile access**
- **Web-based admin for system admin and end-user**
- **No changes required with mobile phone or mobile cellular service provider**
- **CCM 4.x and 5.x compatible**

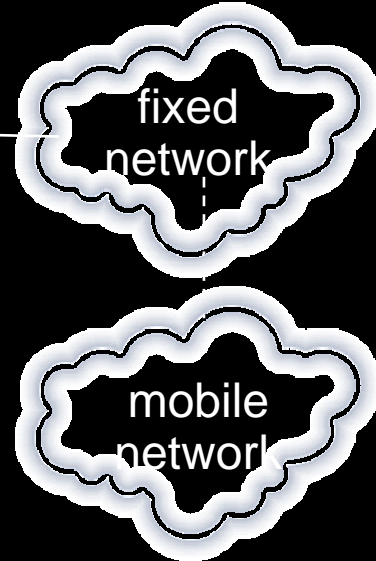
Cisco / Nokia Dual Mode Solution

Enterprise Infrastructure

- Cisco Call Manager
- CM Express
- CCM user license
- Cisco Mobility Manager
- Cisco WLAN
- Cisco ISR
- VPN3000 / Firewall

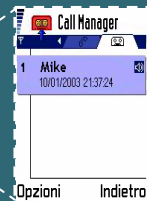


Operator infrastructure

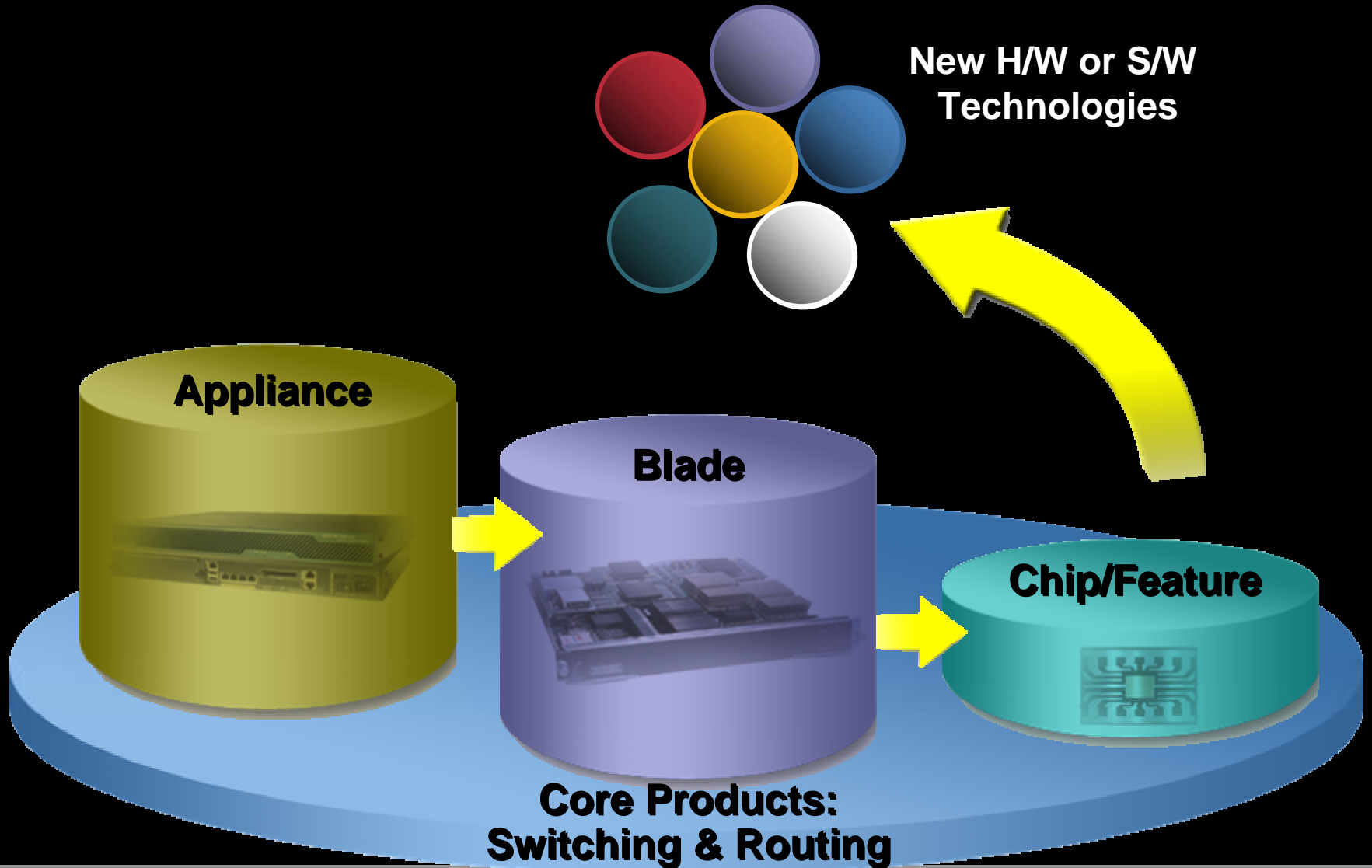


- Nokia S60 Device
- CCX Compatible
- Nokia SCCP Client
- Nokia Mobile VPN
- Nokia Mobile Email
- Nokia Business Center (Push Email+PIM)
- Nokia Device Manager
- Pointsec File Crypto
- Symantec Mobile Security

Nokia SCCP Mobile Client



Expanding the Coverage - CCX

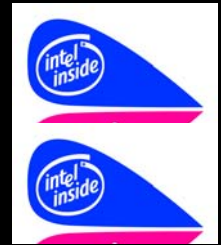


Cisco Compatible eXtensions

Clients and Wireless Access points Compatibility

<http://www.cisco.com/go/ciscocompatible/wireless>

- CCX is a Cisco program to develop interoperability with semiconductor and client vendors with Cisco Access Points WLAN.
- CCX provides additional functionalities (Security, QOS, Performance and battery Management and end to end performance) improvement while working with Cisco APs and Cisco Wireless Infrastructure

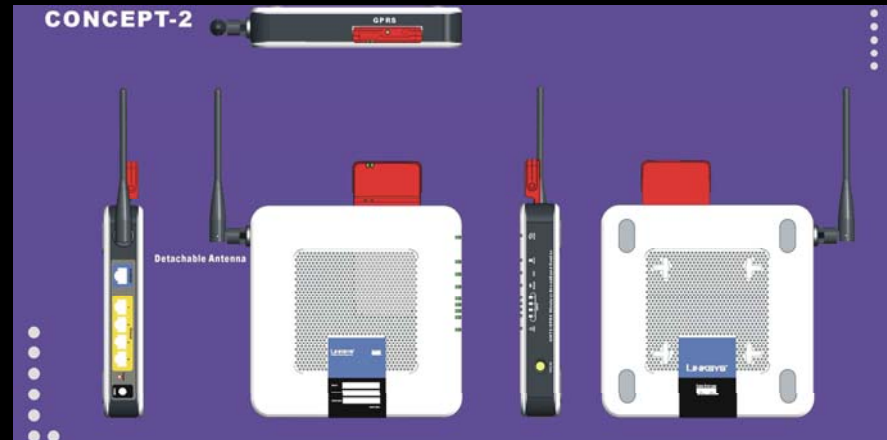


Littlebox: Linksys-Based WLAN/3G Router

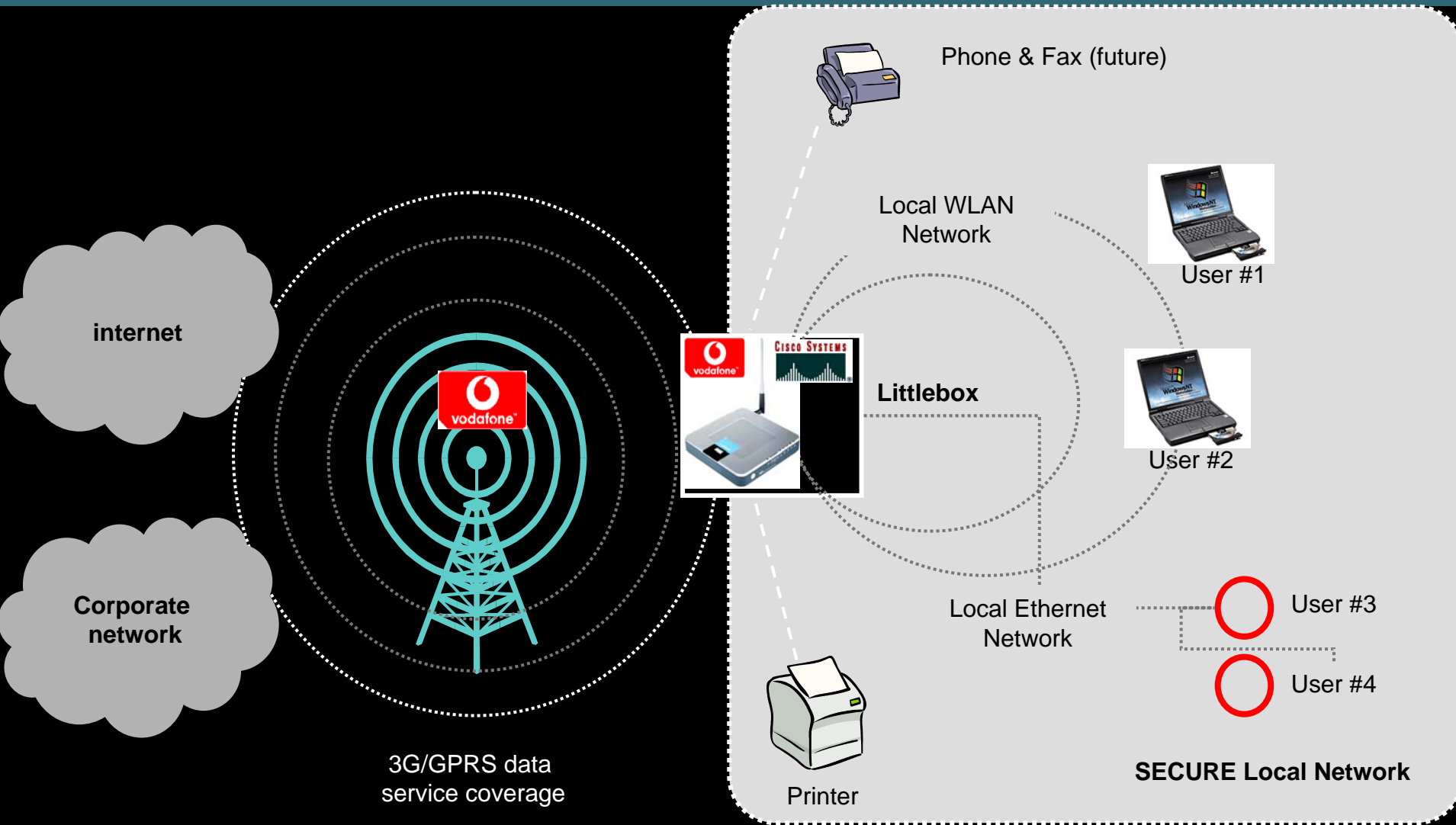


Initial Feature Set

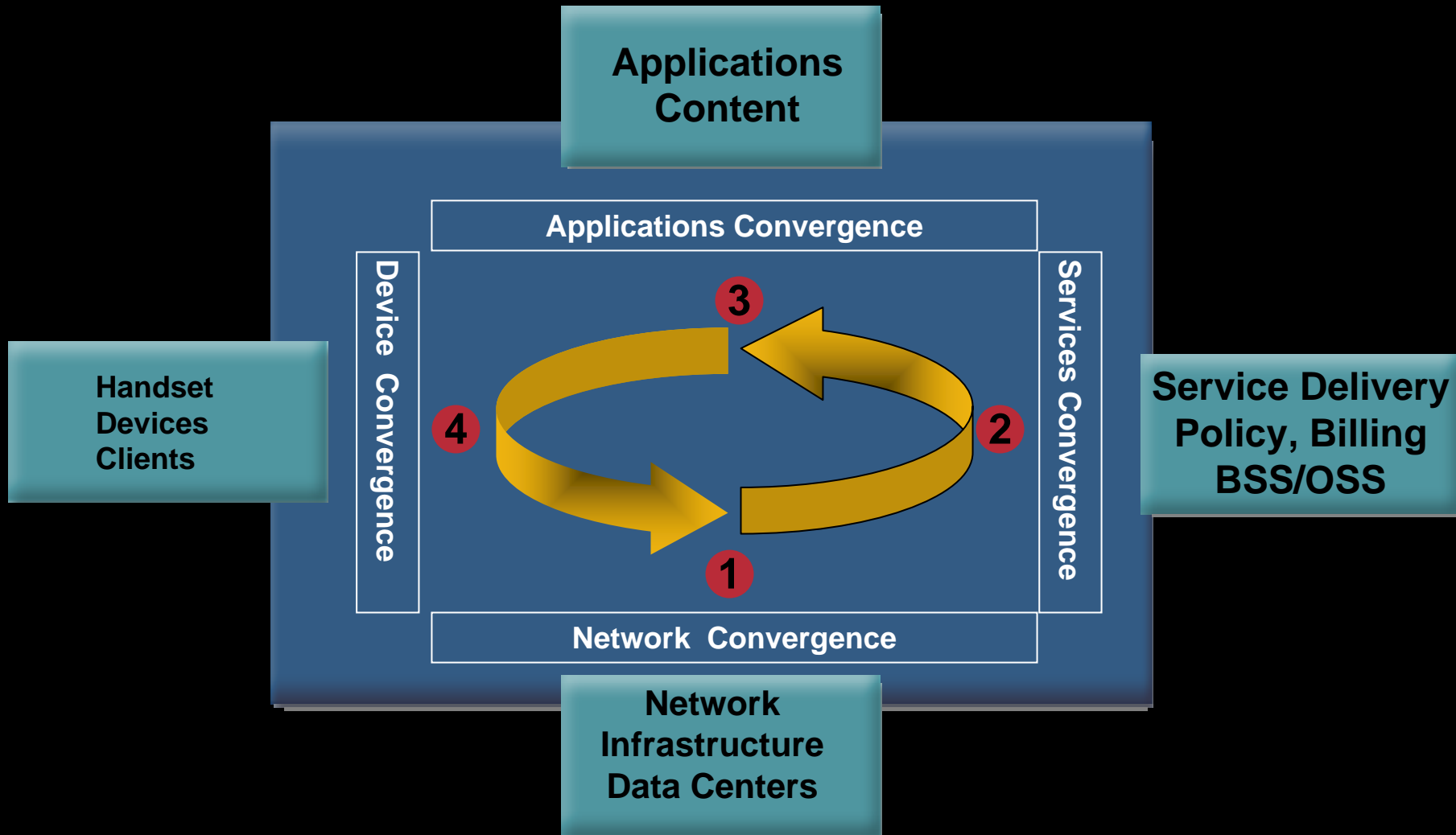
- 54 MB/s WLAN hotspot
- PCIMCA card slot to take Vodafone 3G data card
- 4-port Ethernet hub to support local networking and peripheral devices eg printer,
- Internal software customised to support Vodafone card and services



Connect Box



Mobility Ecosystem is evolving in 4 dimensions



CISCO SYSTEMS

